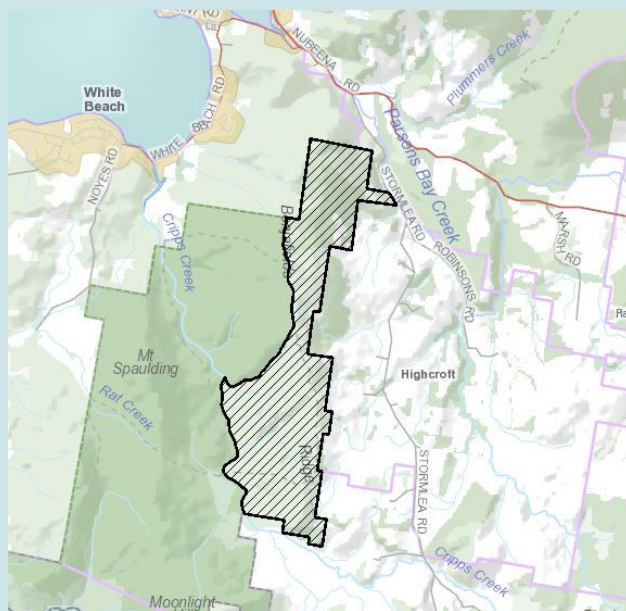


Future Potential Production Forest Land



October 2014

Future Potential Production Forest Land

The Future Potential Production Forest Land dataset is the authoritative source for information on land managed as Future Potential Production Forest land (FPPF) under the *Forestry (Rebuilding the Forest Industry) Act 2014*.

Initially the dataset will contain the 243 lots defined by the Act and depicted on CPR9760. The dataset will be maintained with any changes that may occur as a result of dealing with FPPF land as allowed under the *Forestry (Rebuilding the Forest Industry) Act 2014*

The spatial dataset represents the authoritative interpretation of the spatial definition of FPPF land. As CPR9760 was not based on Tasmania's authoritative spatial cadastral & administrative datasets, the indicative boundaries from the plan had to be spatially interpreted to allow integration with other LIST datasets. This may give the appearance of some differences between the plan & spatial dataset but this dataset represents the current interpretation of the extent of FPPF land under the *Forestry (Rebuilding the Forest Industry) Act 2014*.

This dataset is managed within and derived from The LIST CadArea (Cadastral Area) table within The LIST cadastral model. FPPF land will overlap the Authority Land parcels forming part of the Cadastral Parcels dataset.

Fields will indicate Lot, Plan and Proclamation information for these parcels.

Future Potential Production Forest Land Data Structure

Formats available: MAPINFO TAB; ESRI SHAPE

Datum: GDA94

Projection: MGA94 Zone 55

Geometry: Polygon

Field	Type	Description
CID	INT32	Cadastral Identifier – The unique database identifier for each cadastral polygon
CATEGORY	CHAR(60)	The description of the classification of a cadastral area
LOT_NUM	CHAR(30)	The Lot number from the plan and proclamation
COMP_AREA	DECIMAL(16,3)	The computed area of the region in square metres
MEAS_AREA	DECIMAL(16,3)	The area in square metres recorded on the Plan/Proclamation relating to the feature
PLAN_REF	CHAR(10)	A Plan Registration Number assigned by a Plan Authority
PLAN_AUTH	CHAR(60)	The description for the authority under which a plan is registered
INST_TYPE	CHAR(60)	The instrument type or method used to create, alter or revoke the instance of a region
INST_NO	CHAR(40)	The instrument details (No of Year) used to create, alter or revoke the instance of a region
GOVERN_ACT	CHAR(60)	The Act that the instance of a region is operating under
GAZ_DATE	CHAR(19)	The data of the Gazette relating to the region's creation. Format YYYY-MM-DD HH:MM:SS
EFFEC_DATE	CHAR(19)	The date the instance of the region became effective in this category. Format YYYY-MM-DD HH:MM:SS
UFI	CHAR(12)	Unique Feature Identifier – a unique identifier attached to every representation of a feature instance within The LIST
FMP	CHAR(12)	Feature Metadata Pointer – a code relating to information on lineage and accuracy of each feature
CREATED_ON	CHAR(19)	Date which the region created in the Cad_Area table. Format YYYY-MM-DD HH:MM:SS

GSB Use only - Extraction parameters

Retired_on: null

Status: 0

Cad_type: 11

Metadata – <https://www.thelist.tas.gov.au/app/content/data/geo-meta-data-record?detailRecordUID=527a4ce1-7bf3-4973-ada8-8dd040dfd41b>

View Data in the LIST –

http://maps.thelist.tas.gov.au/listmap/app/list/map?layout-options=LAYER_LIST_OPEN&cpoint=147.7507,-43.14397,10000&srs=EPSG:4283&bmlayer=3&layers=1135

Data Pricing – Standard Commercial Rate

Base Data Fee (Standard Supply) \$0

Fees may apply for data extraction and supply.

Contact

Geodata Client Services

E-mail: Geodata.Clientservices@dpipwe.tas.gov.au

Phone: (03) 6165 4444

Fax: (03) 6233 6568

Post: Client Services Section
 Geodata Services Branch
 DPIPWE
 GPO BOX 44
 HOBART TAS 7001