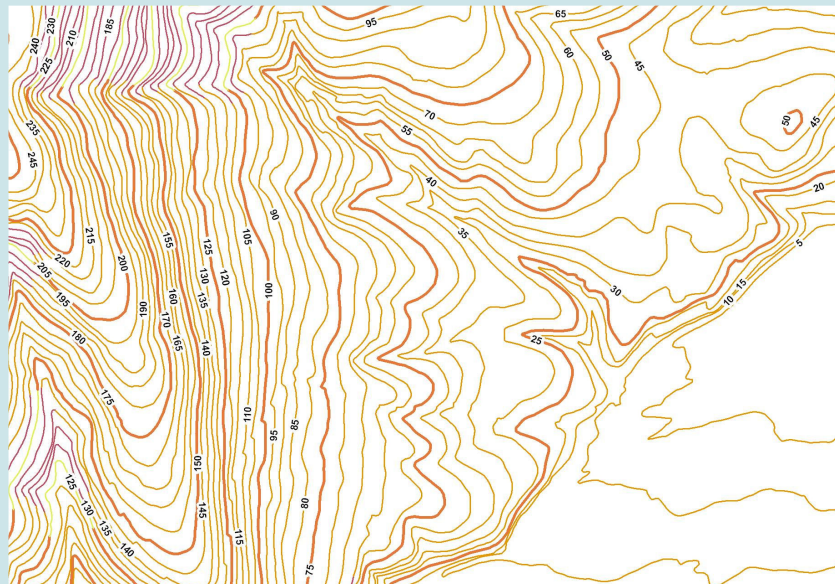


Contours



July 2009

Contours - Description

There are two datasets available for **Contours: Contours 10m** or **Contours 5m**.

Contours 10m

Contour lines at 10 metre intervals have been derived from the 1:25,000 map series and coverage includes all Tasmania and offshore islands excluding Macquarie Island. This is a seamless coverage and attributes are complete. This dataset is only reviewed and maintained as required on a 1:25,000 map tile basis in sequence with the map revision program.

Contours 5m

Contour lines at 5 metre intervals have been derived from the former 1:5,000 Orthophoto/Cadastral map series and coverage generally only extends to urban areas and towns. This data is not seamless and edge matching has not been completed for all the map sheet tiles in this coverage. There may be incomplete data in some areas where dense vegetation is present. This dataset is not being revised.

Contours - Data Structure

Formats available: MAPINFO TAB; ESRI SHAPE

Datum: GDA94

Projection: MGA94 Zone 55

Geometry: Line

The following attributes are supplied with both Contours 10m and Contours 5m:

Field	Type	Description
CONTOUR_ID	INT32	Contour ID – A unique ID for every feature within this dataset
CONTOUR_TY	CHAR(60)	The type of contour whether Intermediate, Index, Depression, Form Line etc.
ELEVATION	INT	The Elevation of the contour in metres above Australian Height Datum (AHD)
COMP_LEN	DECIMAL(16,3)	The computed length of the feature instance in metres
UFI	CHAR(12)	Unique Feature Identifier – a unique identifier attached to every representation of a feature instance within The LIST
FMP	CHAR(12)	Feature Metadata Pointer – a code relating to information on lineage and accuracy of each feature
CREATED_ON	CHAR (19)	Date which the line was created or last edited. Format YYYY-MM-DD HH:MM:SS

Metadata

LIST Contours: <http://www.thelist.tas.gov.au/asdd/ANZTA0005000013.html>

Links



<http://www.thelist.tas.gov.au>

Data Pricing – Standard Commercial Rate

For either Contours 10m or Contours 5m:

Base Data Fee (Standard supply)	\$100.00 for areas up to 1200 square kilometres \$0.03 for each additional square kilometre
Administration & Licensing	\$100.00
Plus 10% GST	

Additional fees may apply for supply of data in non supported formats

Contact

LIST Data Sales:

E-mail: listdatasales@dpipwe.tas.gov.au
Phone: (03) 6233 6039
Fax: (03) 6233 3717
Post: LIST Data Sales
Geodata Services Branch
DPIPWE
GPO BOX 44
HOBART TAS 7001