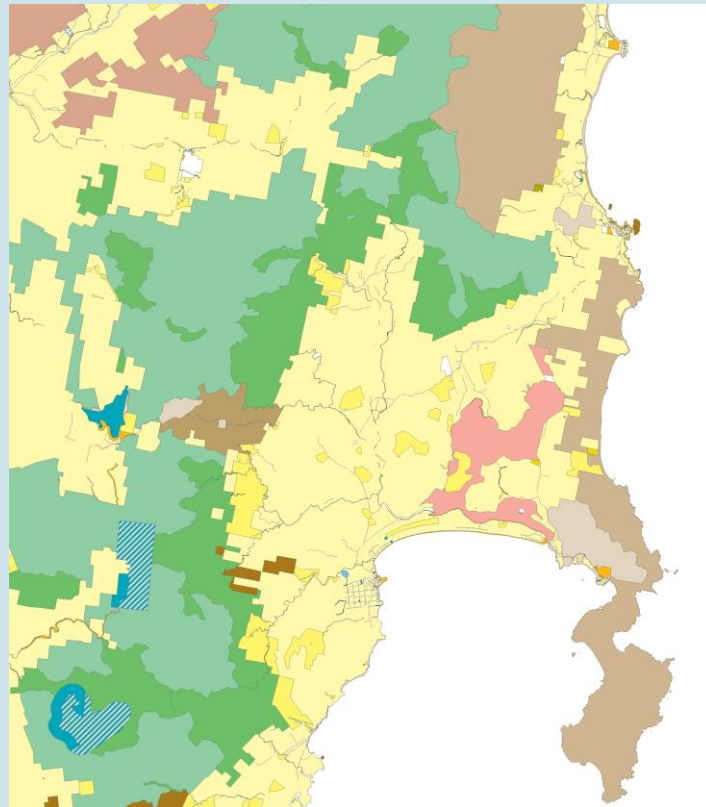


Land Tenure

Dataset



March 2014

Land Tenure

The Land Tenure data set contains a representation of the commonly accepted tenure classifications for Tasmania. Tenure Classifications include Crown Land, Private Land, Reserved Land, Conservation Covenants, Private Reserves and Permanent timber production Zone Land (formerly State Forest). This dataset depicts the full extent of classifications and as some coastal reserve boundaries extend to Low Water Mark, and can include areas of estuary or sea. These classifications generally conform to those represented on previous editions of the TASMALP 1:100,000 Land Tenure Index Series and the 1:500,000 Land Map.

The Land Tenure dataset is generated from an automated process using FME from the following ILS spatial layers: Cadastral Parcels, Public Land Classification, Leases and Licences, Private Reserves and Local Government Act Reserves. During this process, overlaps between layers have been eliminated. Some generalisation of categories has occurred during processing to give priority in depiction where overlaps exist. This dataset is re-generated on a weekly basis. The Created_On date will indicate the date of the re-generation.

There are a number of instances where valid overlapping categories occur. These are depicted as a distinct class and include: HEC Conservation Area and LGA Conservation Area.

Users should be aware that as this dataset has been derived from a number of Themes from data maintained within the Cadastral Data Model, the information provided is for indicative purposes and reference should be always made to the relevant dataset, title or proclamation for the authoritative information.

Land Tenure - Data Structure

Formats available: MAPINFO TAB; ESRI SHAPE

Datum: GDA94

Projection: MGA94 Zone 55

Geometry: Polygon

Field	Type	Description
TEN_CLASS	CHAR(50)	The Classification of the Tenure of the Land
ACT	CHAR(50)	The Act that the reserve has been proclaimed under if applicable
FEAT_NAME	CHAR(75)	The name of the Reserve where applicable
TENURE_ID	NUMBER(9,0)	The identifier for a Tenure Polygon
CREATED_ON	CHAR(19)	The Date the feature has been generated on

Tenure Classifications included in this dataset are:

CLASS	ACT
Crown Land	Crown Lands Act
Crown Lease or Licence	Crown Lands Act
Public Reserve	Crown Lands Act
Permanent Timber Production Zone Land	Forest Management Act
Local Government Act Reserve	Local Government Act
Conservation Area	Nature Conservation Act
Conservation Covenant	Nature Conservation Act
Game Reserve	Nature Conservation Act
HEC Conservation Area	Nature Conservation Act
Historic Site	Nature Conservation Act
LGA Conservation Area	Nature Conservation Act
National Park	Nature Conservation Act
Nature Recreation Area	Nature Conservation Act
Nature Reserve	Nature Conservation Act
Private Nature Reserve	Nature Conservation Act
Private Sanctuary	Nature Conservation Act
Regional Reserve	Nature Conservation Act
State Reserve	Nature Conservation Act
Authority Crown	Not Applicable
Authority Freehold	Not Applicable
Hydro-Electric Corporation	Not Applicable
Local Government	Not Applicable
Private Freehold	Not Applicable
Casement	Various
Commonwealth	Various
Wellington Park	Wellington Park Act

Users should be aware that generation of statistics from this data may not prove an accurate figure due to the omission of Macquarie Island, and that many reserves include areas of water. Due to the overlapping nature of many of these classifications and the way overlaps have been treated in this depiction, the true area of individual classifications may not be apparent.

Users must not create statistics derived from this data without seeking prior permission and advice from Information and Land Services Division, DPIPW.

Metadata – [Click Here](#)

View Data in the LIST – [Click Here](#)

Data Pricing – Standard Commercial Rate

Contact Client Services for details on pricing and licencing for this data

Additional fees may apply for supply of data in non supported formats

Contact

Geodata Client Services

E-mail: Geodata.Clientservices@dpiwwe.tas.gov.au

Phone: (03) 6165 4444

Fax: (03) 6233 6568

Post: Client Services Section
Geodata Services Branch
DPIPWE
GPO BOX 44
HOBART TAS 7001