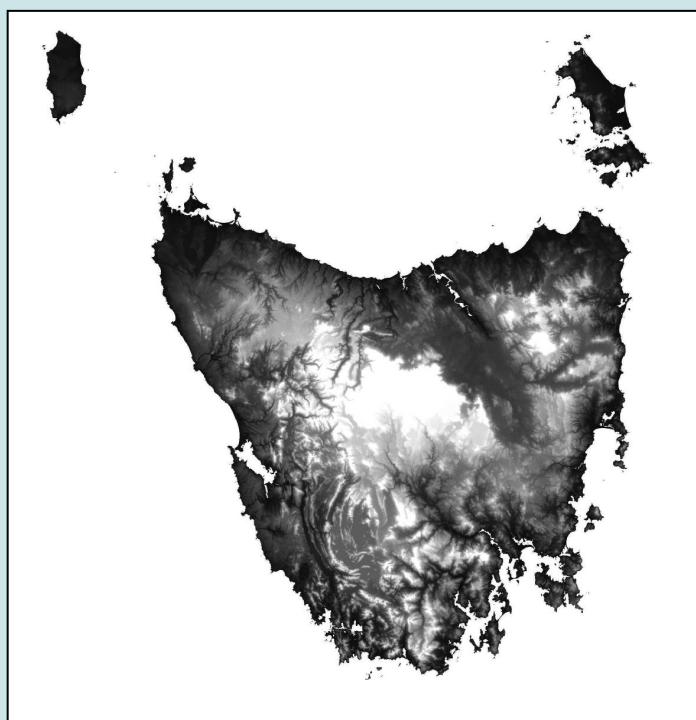


Tasmanian 25 metre DEM

Dataset



November 2009

Tasmania 25 metre DEM

This Digital Elevation Model (DEM) covers all Tasmania and offshore islands excluding Macquarie Island. This 3rd Edition was produced in July 2007 and replaces earlier versions.

INPUT DATA:

The original source data for this DEM was derived from 1:25,000 Map Series and consists primarily of LIST 10m contours, spot heights over some areas, some waterbody polygons, and mean high water mark. Those areas where spot height data was available cover King Island, the Furneaux Group, Maria Island, and a number of 1:25,000 map sheets on mainland Tasmania.

See the map on page 2 for areas where spot heights were included and for DEM coverage.

PROCESSING

Using Intergraph Terrain Analyst software the DEM was produced by creating a triangulated surface from the 10 metre contours, existing digital spot heights, water bodies where there is a known full supply level elevation attribute, and mean high water mark with an elevation attribute of 1 metre.

Users should be aware that drainage strings were not used in the generation of this DEM, therefore, it is not suitable for use in hydrological analysis.

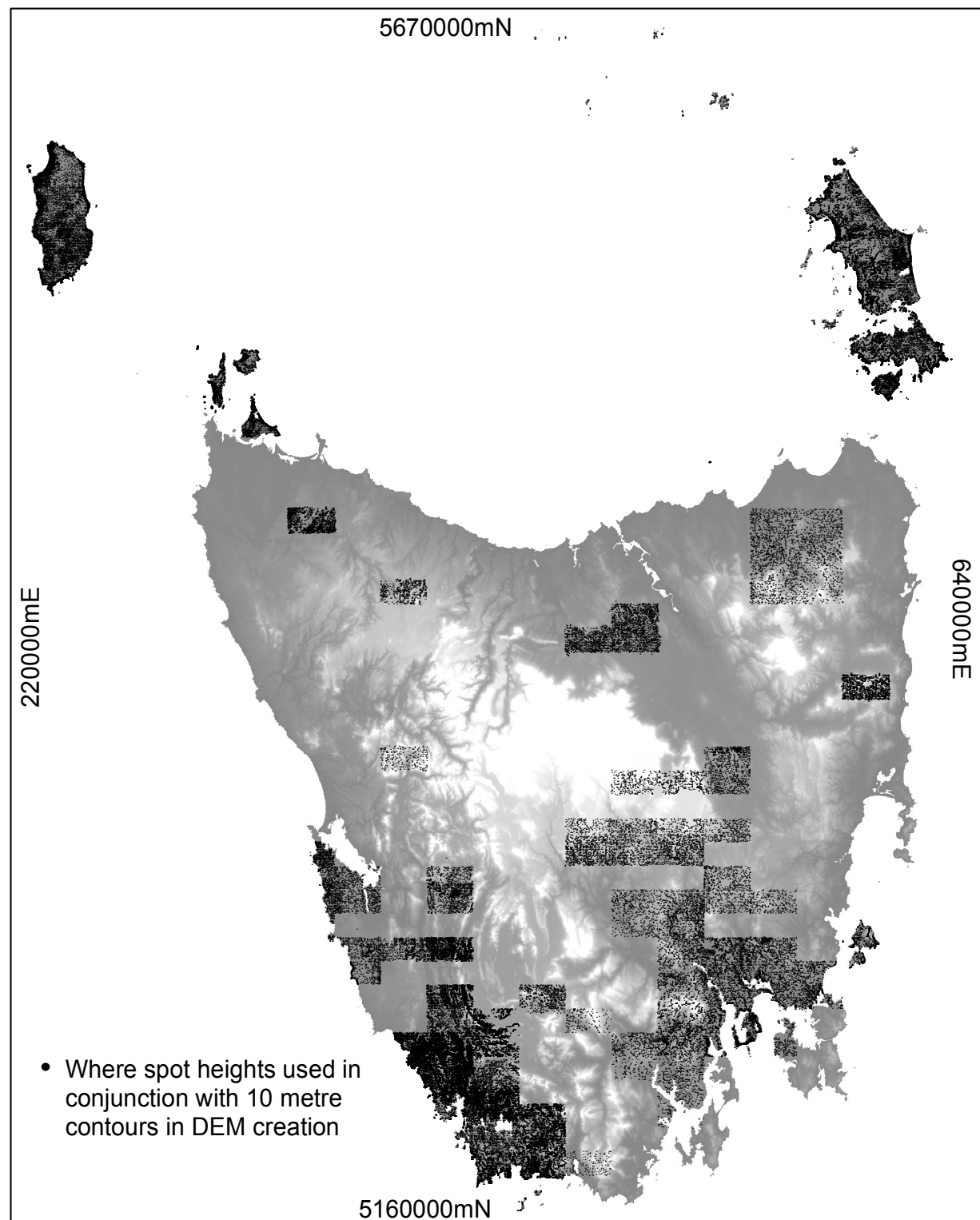
ACCURACY

The accuracy of the DEM is similar to the 1:25,000 Map Series data used as input ie. 90% of elevations are within 5m of true elevation. This accuracy may not be maintained in obscured areas affected by vegetation or other obstructions and in steep areas.

COORDINATE SYSTEM - MGA, zone 55

DATUM - GDA94

Third Edition 25 metre DEM Coverage - July 2007



Metadata

<http://www.thelist.tas.gov.au/asdd/ANZTA0005000159.html>

Links



<http://www.thelist.tas.gov.au>

Data Pricing – Standard Commercial Rate

Base Data Fee	\$1250.00
GST	\$ 125.00
Total	\$1375.00

Contact

LIST Data Sales

E-mail: listdatasales@dpiw.tas.gov.au

Phone: (03) 6233 6039

Fax: (03) 6233 3717

Post: LIST Data Sales
Geodata Services Branch
DPIPWE
GPO BOX 44
HOBART TAS 7001